

141.952 LHM600 Rostock - Esbjerg

Info:

GM = 4.63

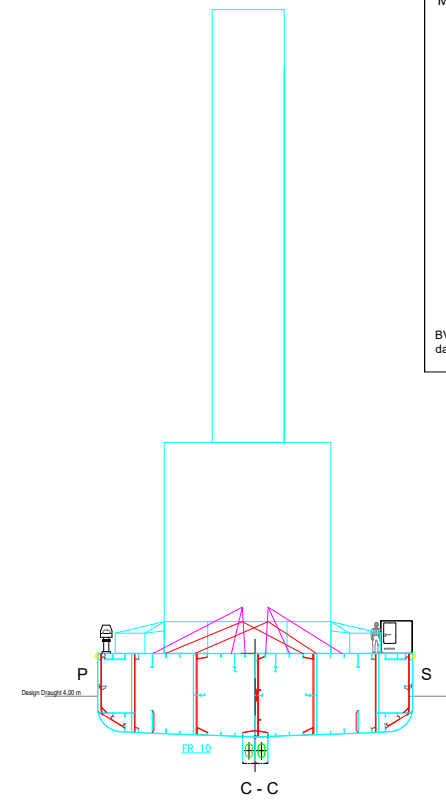
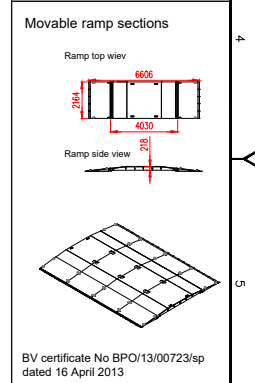
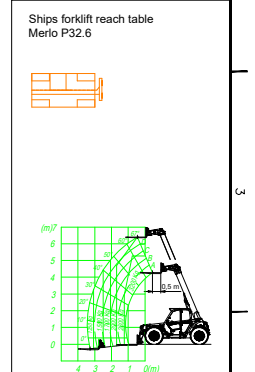
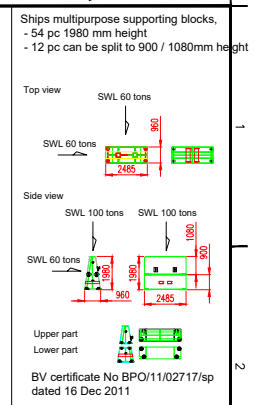
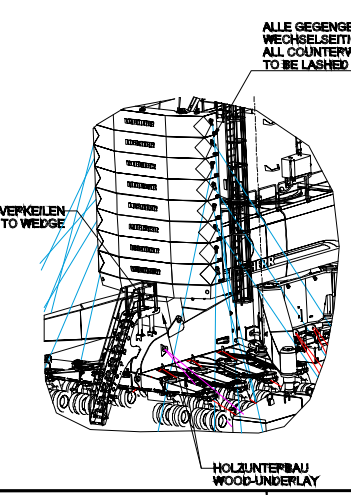
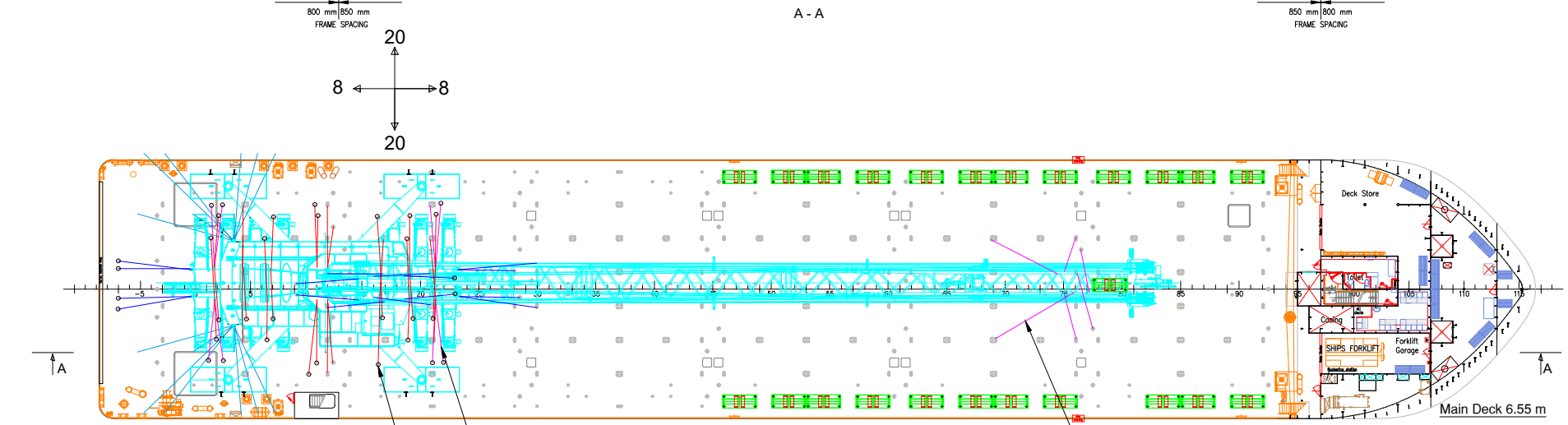
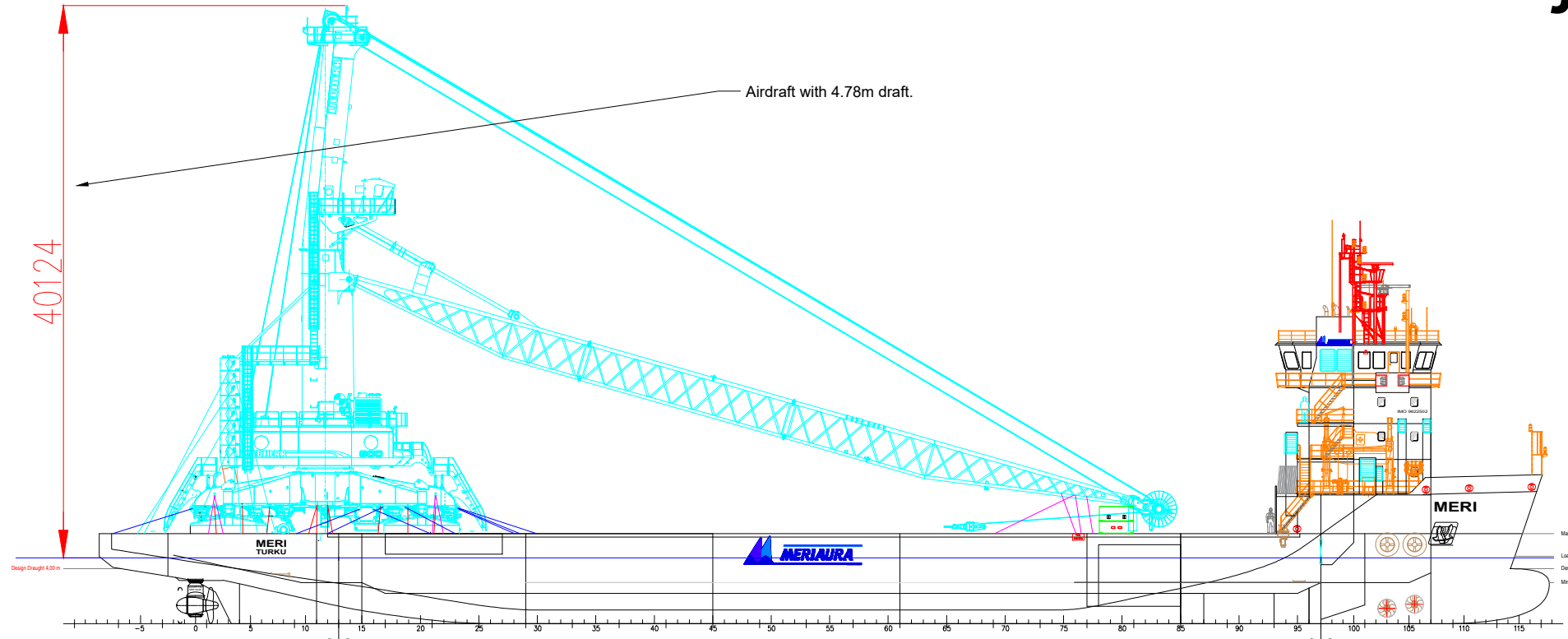
Hs = 4.0m

SEA FASTENING:

-Total 62pcs of wires

-Approx. 35pcs of weldable D-rings

-8pcs of Liebherr's stoppers.



Date:	17.10.2022	Name:	JMK	Client:	MERIAURA
Designed by:	17.10.2022	Checked by:			Linnankatu 88, FIN-20100 Turku Tel +358 2 2111 600 www.meriaura.fi projects@meriaura.fi
Approved by:					LIEBHERR
Project:	141.952 LHM600			Vessel:	MERI
Drawing title:	Stowage plan				
DRW No:				Revision:	A

Revision	Remarks	Date
A		

Copyright of Meriaura Oy. All rights reserved. No part thereof may be copied, published or in any other way made use of, except with the prior approval of Meriaura Oy. Also any unauthorized possession of this document or any part thereof is prohibited without the prior approval of Meriaura Oy.